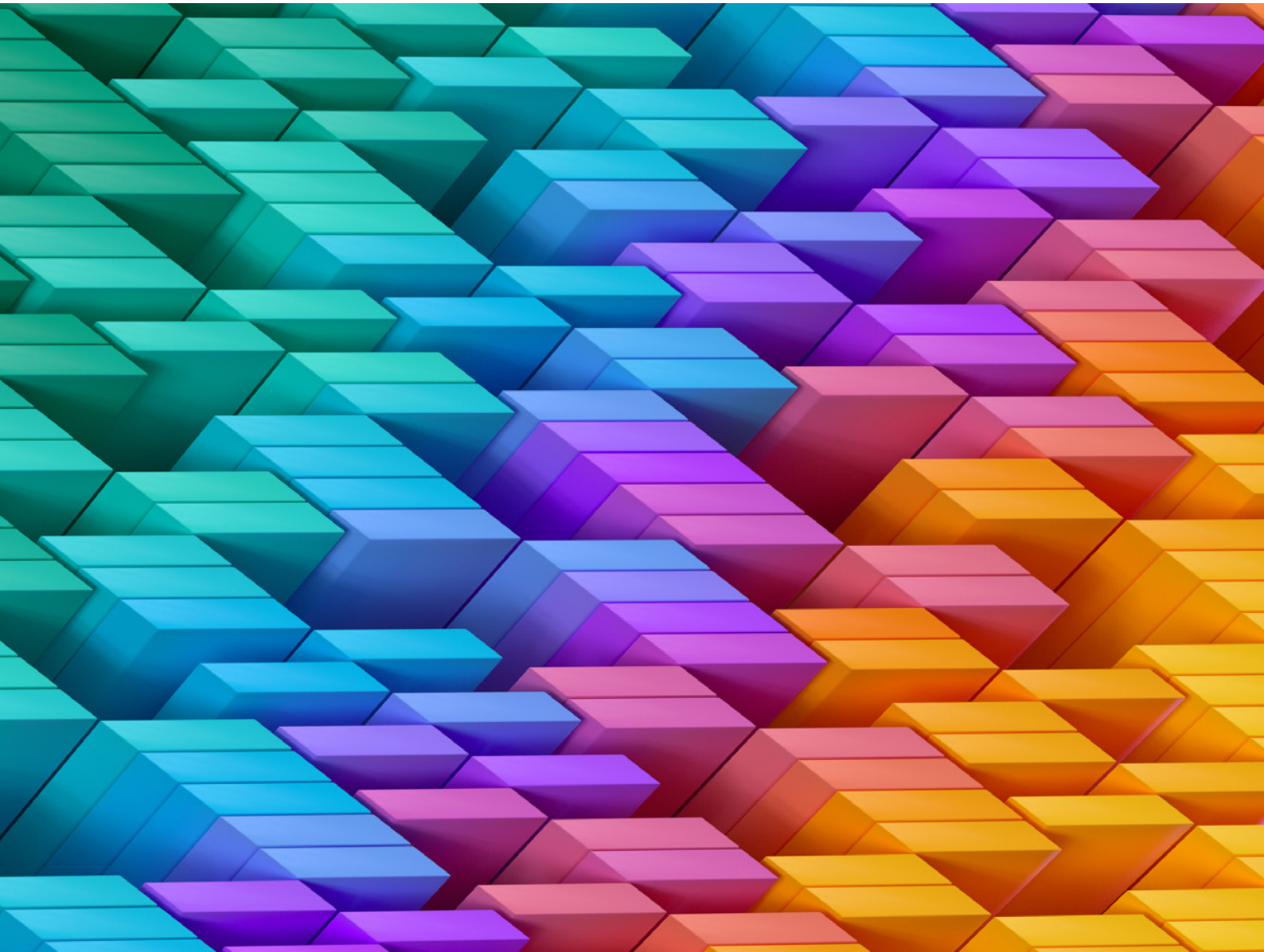


# HPE Aruba Networking Central SaaS Subscriptions

**HPE**   
GreenLake



## About HPE Aruba Networking Central

[HPE Aruba Networking Central](#) is a powerful cloud-managed networking solution that dramatically simplifies today's IT operations across branch, campus, data center, and remote worker locations. As the management and orchestration engine for HPE Aruba Networking Edge Service Platform (ESP), HPE Aruba Networking Central provides a single point of control to deploy, manage, and optimize every aspect of wireless, wired, and WAN infrastructure by delivering AI-powered analytics, end-to-end workflow automation and orchestration, and advanced security features. The solution is now integrated with HPE GreenLake, providing a consistent operating model and single platform for IT executives to view and manage their compute, storage, and networking infrastructure for unmatched efficiency and improved cost controls.

### HPE Aruba Networking Central SaaS subscription overview: simple, flexible ordering

HPE Aruba Networking Central is licensed on a per-device basis for the HPE Aruba Networking access points, switches, and gateways that you wish to manage within your environment.

Subscription licenses are available in two tiers—Foundational and Advanced—and come with 1-, 3-, 5-, 7-, or 10-year terms.

This framework provides a simple, yet flexible purchasing experience for every area of networking while making it easy to align requirements for AIOps, security, and other desired features to both current and future budgets.

In addition, flexible consumption options and payment models are available with the as-a-Service (aaS) SKUs for access points, switches, and gateways. The flexible consumption options include delayed activation for up to 90 days, license co-termination, mid-cycle tier upgrade, and seamless license renewal. [Learn more](#) about flexible consumption options.

**Note:** The Foundational and Advanced subscription features described in this ordering guide are also applicable to the aaS SKUs. The as-a-Service SKUs end with 'AAS' and are listed separately in the ordering information tables.

### HPE Aruba Networking Central on-premises

For customers who want the agility and efficiency of the cloud but need to adhere to stringent regulatory and compliance requirements, an on-premises version of HPE Aruba Networking Central is also available. HPE Aruba Networking Central On-Premises is a powerful network management system designed to simplify the deployment and maintenance of wireless and wired networks at scale. It delivers a cloud-like management experience for organizations that need to improve IT agility and efficiency, while also satisfying regulatory or compliance requirements.

The solution is comprised of two primary components:

1. Physical server-based appliances that run in a customer's data center environment.
2. Software subscriptions that enable management features for supported HPE Aruba Networking devices.

Currently flexible consumption options such as delayed activation, license co-termination, mid-cycle tier upgrades, and renewals are not available for on-premises deployments. Please refer to the [HPE Aruba Networking Central On-Premises Ordering Guide](#), which contains ordering information, supported devices, additional technical specifications, deployment options and sample bills of materials.

### HPE Aruba Networking Central SaaS subscriptions for access points

Table 1 provides a mapping of available features that are supported in the Foundational and Advanced subscription tiers for supported HPE Aruba Networking access points when running HPE Aruba Networking Wireless Operating System AOS-10.

**Note:** Services that require a gateway are not supported in Instant AOS running on HPE Aruba Networking Central. These include Live Upgrade, Multi-zone, L2/L3 roaming, and Unified SD-Branch monitoring and configuration. AOS-10 and HPE Aruba Networking Central support the new HPE Aruba Networking EdgeConnect Microbranch solution; Instant 8.x and HPE Aruba Networking Central support IAP VPN.

For a list of [supported Instant APs](#) and [supported APs for AOS-10.x](#), please refer to the Help Center documentation.



**Table 1.** Features for AP HPE Aruba Networking Central Foundational and Advanced subscriptions

Features	Foundational	Advanced
<b>Deployment and configuration</b>		
<b>UI- and template-based group configuration</b> Simplify deployment with template-based configuration and streamlined provisioning of devices or groups of devices.	✓	✓
<b>Auto-commit</b> Apply configuration changes instantly with the auto-commit state enabled.	✓	✓
<b>Configuration audit</b> Review device configuration changes including errors and device-level overrides on an audit dashboard.	✓	✓
<b>Monitoring and reporting</b>		
<b>Network health and Wi-Fi connectivity dashboards</b> Review network health, summary, and Wi-Fi connectivity dashboards for an overall view of network performance and connectivity status for each client endpoint.	✓	✓
<b>Network topology</b> Graphical representation of the site network layout with details of all devices being managed, including APs, AOS-S switch, AOS-CX switches, and third-party devices.	✓	✓
<b>Visual RF floorplans</b> Ability to plan wireless coverage of sites and create AP floorplans with a real-time view of the radio environment of your wireless network.	✓	✓
<b>Client list and details</b> Review unified list of all clients that are connected to access points, switches, or gateways in the network with performance status, connection status, and more.	✓	✓
<b>Application visibility</b> Allows for the creation of application-specific firewall policies and includes features such as deep packet inspection (DPI) and application-level monitoring to assess user-impacting issues.	✓	✓
<b>Web Content Classification (WebCC)</b> Web Content Classification, policy, and reputation service that helps enforce acceptable network usage policies, including blocking or rate-limiting certain connections.	✓	✓
<b>Data access</b> <ul style="list-style-type: none"> <li>• Access to all the above monitoring data for up to 30 days</li> <li>• Access to reporting data for up to 90 days</li> <li>• Access to historical Client Summary Report data for up to 1 year</li> </ul>	✓	✓
<b>Audit trail</b> Review total number of logs generated for all device management, configuration, and user management events triggered in the network.	✓	✓
<b>Alerts and events</b> Unified dashboard view of generated alerts and events that pertain to device provisioning, configuration, and user management.	✓	✓
<b>Access, spectrum, monitor mode of radio operations</b> Supports the access, spectrum, and monitor modes that determine radio operation for an AP.	✓	✓
<b>UXI sensor integration</b> UXI sensors deliver continuous monitoring and testing of wireless, wired, and WAN performance, reporting any anomalies directly to the HPE Aruba Networking Central network health dashboard.	✓	✓



**Table 1.** Features for AP HPE Aruba Networking Central Foundational and Advanced subscriptions

Features	Foundational	Advanced
<b>AI Ops</b>		
<b>AI Search</b>		
GenAI-powered search engine trained on multiple large language models (LLM) that enables operators to quickly and easily find relevant information related to network devices or status (e.g. poor Wi-Fi connectivity), configuration and troubleshooting tips, and more. Search results are based on user intent and trained on the vast HPE Aruba Networking data lake. Search-driven navigation and LLM-generated summarizations streamline the process, reducing time spent clicking through menus or documents.	✓	✓
<b>AI Insights</b>		
Automatically detect a broad range of anomalies observed at the access point, connectivity, and client level with specific details on the occurrences for faster troubleshooting, root cause analysis, and incident resolution. Includes: <ul style="list-style-type: none"> <li>• Wi-Fi Connectivity</li> <li>• Wireless Quality</li> <li>• Access Point Availability</li> <li>• Class and Company Baselines</li> </ul> Examples for HPE Aruba Networking APs and connected clients include: AP with High CPU Utilization, AP with High Number of Reboots, Clients with High Roaming Latency, Delayed DNS Request or Response, and Clients with High Number of Wi-Fi Association Failures. <a href="#">View the full list here.</a>	✓	✓
<b>AI Insights (advanced)</b>		
Advanced insights for Wireless Quality include: <ul style="list-style-type: none"> <li>• Outdoor clients impacting Wi-Fi performance</li> <li>• Coverage Hole Detection</li> <li>• Transmit power optimization</li> </ul>		✓
<b>AI Assist</b>		
Dynamically runs CLI show commands and generates logs that can be used to troubleshoot AP-related issues.	✓	✓
<b>AI Assist (advanced)</b>		
Option that automatically notifies HPE Aruba Networking TAC and sends the generated logs for accelerated support case management.		✓
<b>Dynamic power save mode</b>		
APs enter dynamic power save mode, autonomously waking up on a schedule to meet connectivity demand. AI-driven power saving schedules are regularly assessed, accessible in the AI Insights tab of Central.	✓	✓
<b>Troubleshooting</b>		
<b>Troubleshooting tools</b>		
<ul style="list-style-type: none"> <li>• Network Check—Run diagnostic checks on networks and troubleshoot client connectivity issues.</li> <li>• CLI Commands—Perform network health check at an advanced level using command categories.</li> </ul>	✓	✓
<b>Live events</b>		
Information required to troubleshoot issues related to a client, an access point, or a site in real time.	✓	✓
<b>Live Packet Capture (PCAP)</b>		
Allows users to interact and launch a targeted packet capture on a client connected to a specific AP or a switch to measure application response time to determine quality of experience for end users.	✓	✓



**Table 1.** Features for AP HPE Aruba Networking Central Foundational and Advanced subscriptions

Features	Foundational	Advanced
<b>Wireless services</b>		
<p><b>HPE Aruba Networking AirGroup</b> Leverages zero configuration networking to enable services such as Apple® AirPrint, AirPlay, DIAL, DLNA Media, DLNA Print, Amazon Fire TV, and Google Cast from third-party devices in an efficient manner.</p>	✓	✓
<p><b>Advanced AirGroup services</b> • Custom services</p>		✓
<p><b>HPE Aruba Networking AirMatch</b> Automates RF channel assignment, channel width, and radio power assignments using machine learning algorithms. Provides even distribution of radios across available channels to mitigate interference and maximize system capacity.</p>	✓	✓
<p><b>HPE Aruba Networking ClientMatch</b> Patented RF optimization technology that scans APs in the neighborhood to ensure that client devices associate with the best performing AP.</p>	✓	✓
<p><b>Presence analytics</b> Enables businesses to collect and analyze user presence data and real-time data on user footprints in public venues, enterprise environments, and retail hubs.</p>	✓	✓
<p><b>IoT operations</b> Unifies visibility of wireless and IoT infrastructure by providing at-a-glance views of IoT applications and BLE and Zigbee devices on the network. Install IoT application plugins and provision IoT Connectors (deployed as virtual appliances) in just a few mouse clicks. APs can also be deployed as IoT connectors. This reduces the cost of managing and maintaining separate IoT connectors and provides IT operators the flexibility to choose between APs or VMs.</p> <p><b>Note:</b> Certain AOS-10-specific partner integrations require an Advanced License.</p>	✓	✓
<p><b>HPE Aruba Networking AirPass</b> Provides seamless Wi-Fi connectivity for SIM enabled cellular devices for major mobile operators to enable Wi-Fi calling and to offload 5G/LTE traffic to enterprise wireless networks.</p> <p><b>Notes:</b></p> <ul style="list-style-type: none"> <li>• Currently available in US only</li> <li>• AP Foundational license supports a single mobile operator</li> <li>• AP Advanced license supports all participating providers</li> </ul>	✓	✓
<p><b>Unified Communications and Collaboration (UCC)</b> Enables a seamless user experience for voice calls, video calls, and application-sharing when using communication and collaboration tools. Provides network administrators a consolidated view of how media collaboration applications are performing.</p>		✓
<p><b>Multi-zone</b> Ideal for multi-tenancy Wi-Fi support where multiple organizations are housed in a single office space or for a single organization that requires separate secure networks and traffic segmentation capabilities.</p>		✓
<b>Security</b>		
<p><b>RAPIDS</b> Enables HPE Aruba Networking Central to quickly identify and act on interfering APs in the network that can be later considered for investigation, restrictive action, or both. Custom rules can be used to classify APs into 7 different categories with RAPIDS.</p>	✓	✓



**Table 1.** Features for AP HPE Aruba Networking Central Foundational and Advanced subscriptions

Features	Foundational	Advanced
<p><b>HPE Aruba Networking Cloud Guest</b>                      Cloud Guest access enables the guest users to connect to the network. A monitoring dashboard that displays the number of guests, guest SSID, client count, type of clients, and guest connection.</p>	✓	✓
<p><b>Cloud authentication</b>                      Provides a seamless, secure way to onboard and authenticate end-users and non-user specific devices (Cameras, thermostats, IP phones, etc.) to wireless networks by integrating with common cloud identity stores such as Google Workspace and Microsoft Azure Directory using passwords/passphrases.</p>	✓	✓
<p><b>Client insights</b>                      Enables network and security administrators to discover, monitor, and automatically classify new and existing client devices that connect to a network. Features include :</p> <ul style="list-style-type: none"> <li>• Basic client MAC Classification based on telemetry data</li> <li>• Client Family, Client Category, Client OS</li> <li>• ML-based client classification</li> <li>• Cloud Auth integration</li> </ul>	✓	✓
<b>API</b>		
<p><b>Northbound (NB) API</b>                      5000 API calls/day base limit which dynamically increases based on the subscribed device count.</p>	✓	✓
<p><b>Streaming API</b>                      Enables you to subscribe to a select set of topics, instead of polling the NB API to get continuous state and stats messages. Also enables you to write value-added applications based on the aggregated context (e.g., get notified of events such as the UP and DOWN status of devices).</p>		✓
<b>HPE Aruba Networking EdgeConnect MicroBranch</b>		
<p><b>EdgeConnect MicroBranch Foundational</b>                      Enables availability, orchestration, security, and monitoring features such as:</p> <ul style="list-style-type: none"> <li>• Layer 2, layer 3 and mixed tunnels</li> <li>• Data Center and WAN redundancy</li> <li>• Cloud Auth survivability</li> <li>• Route or tunnel orchestration</li> <li>• Policy-based routing</li> <li>• Dynamic subnet allocation</li> <li>• Microbranch monitoring</li> </ul>	✓	✓
<p><b>EdgeConnect Microbranch Advanced</b>                      Includes the above capabilities and also enables WAN health visibility and Cloud Connect security for cloud inspection (e.g., Zscaler)</p>		✓



**Table 2.** HPE Aruba Networking Central AP subscription SKUs

SKU	Description
<b>Foundational AP subscription SKUs</b>	
Q9Y58AAE	HPE Aruba Networking Central AP Foundational 1 year Subscription E-STU
Q9Y59AAE	HPE Aruba Networking Central AP Foundational 3 year Subscription E-STU
Q9Y60AAE	HPE Aruba Networking Central AP Foundational 5 year Subscription E-STU
Q9Y61AAE	HPE Aruba Networking Central AP Foundational 7 year Subscription E-STU
Q9Y62AAE	HPE Aruba Networking Central AP Foundational 10 year Subscription E-STU
Q9Y58AAS	HPE Aruba Networking Central AP Foundational 1 year Subscription SaaS
Q9Y59AAS	HPE Aruba Networking Central AP Foundational 3 year Subscription SaaS
Q9Y60AAS	HPE Aruba Networking Central AP Foundational 5 year Subscription SaaS
Q9Y61AAS	HPE Aruba Networking Central AP Foundational 7 year Subscription SaaS
Q9Y62AAS	HPE Aruba Networking Central AP Foundational 10 year Subscription SaaS
<b>Advanced AP subscription SKUs</b>	
Q9Y63AAE	HPE Aruba Networking Central AP Advanced 1 year Subscription E-STU
Q9Y64AAE	HPE Aruba Networking Central AP Advanced 3 year Subscription E-STU
Q9Y65AAE	HPE Aruba Networking Central AP Advanced 5 year Subscription E-STU
Q9Y66AAE	HPE Aruba Networking Central AP Advanced 7 year Subscription E-STU
Q9Y67AAE	HPE Aruba Networking Central AP Advanced 10 year Subscription E-STU
Q9Y63AAS	HPE Aruba Networking Central AP Advanced 1 year Subscription SaaS
Q9Y64AAS	HPE Aruba Networking Central AP Advanced 3 year Subscription SaaS
Q9Y65AAS	HPE Aruba Networking Central AP Advanced 5 year Subscription SaaS
Q9Y66AAS	HPE Aruba Networking Central AP Advanced 7 year Subscription SaaS
Q9Y67AAS	HPE Aruba Networking Central AP Advanced 10 year Subscription SaaS



### Use cases for HPE Aruba Networking Central Advanced AP subscriptions

AP Foundational subscriptions address a wide range of use cases at the base price for HPE Aruba Networking Central. However, several premium features may be desirable, which are only available with an AP Advanced subscription. Please refer to the sample list of use cases below.

1. Higher availability: selecting Advanced AP subscriptions enables Live Upgrades, eliminating the risk of downtime during maintenance windows.
2. Self-remediating workflows: selecting Advanced AP subscriptions enables closed-loop automation with AI Insights such as “Outdoor clients impacting Wi-Fi performance” where HPE Aruba Networking Central can programmatically push configuration changes once the network deviates from desired behavior.
3. Better visibility into Unified Communications and Collaboration apps: selecting Advanced subscriptions enables the UCC service within HPE Aruba Networking Central, so you can ensure the productivity of your distributed workforce by more easily monitoring and troubleshooting the health, usage, and user experience of key applications such as Zoom, Microsoft Teams, and more.
4. Programmability via streaming APIs: selecting Advanced subscriptions enables API Streaming, which provides a continuous stream of data that includes device statistics and state changes for developing dynamic and interactive applications. Telemetry from HPE Aruba Networking Central can also be shared with third party solutions enabling IT teams to automatically trigger actions based on certain events or conditions.
5. WAN health and cloud security orchestration for Microbranch: selecting Advanced subscriptions provides greater visibility into WAN health and orchestration with cloud security vendors (Zscaler with others planned).

### HPE Aruba Networking Central SaaS subscriptions for wireless gateways

In [AOS-10](#), all HPE Aruba Networking Edge appliances are referred to as gateways rather than controllers since they act as a cloud gateway for wireless services that are deployed within HPE Aruba Networking Central.

For wireless use cases, gateways are typically deployed in networks with thousands or tens of thousands of access points for improved scalability, seamless roaming between buildings, or for environments that require enhanced security services. Please refer to the list of [supported gateways](#).

Read the [HPE Aruba Networking Gateways Use Cases](#) document for more details.

**Table 3.** Features for HPE Aruba Networking Central WLAN gateway subscriptions

Feature category	Feature
SD-LAN	<b>Gateway clustering</b> Combines multiple gateways that operate as a single entity to provide high availability and service continuity across a wireless network.
	<b>Tunneling</b> Tunneling traffic from wireless and wired clients.
	<b>Routing</b> Traffic can be routed using both static routing and OSPF.
Configuration	<b>Mobility gateway management</b> Enables onboarding, configuration, deployment, monitoring, and general management of HPE Aruba Networking wireless gateways.





**Table 3.** Features for HPE Aruba Networking Central WLAN gateway subscriptions

Feature category	Feature
	<p><b>UI- and template-based group configuration</b> Simplify deployment with template-based configuration and streamline provisioning of devices or groups of devices.</p> <hr/> <p><b>Configuration audit</b> Review device configuration changes including errors and device-level overrides on an audit dashboard.</p>
<b>Monitoring and reporting</b>	<p><b>Network health and summary dashboards</b> Review wired network performance to gain an overall view of the health status of all switches and connected clients.</p> <hr/> <p><b>Network topology</b> Graphical representation of the site network layout with details of all devices being managed, including AOS-S switches, AOS-CX switches, HPE Aruba Networking APs, HPE Aruba Networking gateways, and third-party devices.</p> <hr/> <p><b>Client list and details</b> Review unified list of all clients that are connected to access points, switches, or gateways in the network with performance status, connection status and more.</p> <hr/> <p><b>Application visibility</b> Allows for the creation of application-specific firewall policies and includes features such as deep packet inspection (DPI) and application-level monitoring to assess user-impacting issues.</p> <hr/> <p><b>Web Content Classification</b> Enhances security by providing real-time web content and reputation filtering. Enables you to classify website content based on reputation and take measures to block malicious sites.</p> <hr/> <p><b>Data access</b></p> <ul style="list-style-type: none"> <li>• Access to all monitoring and reporting data for up to 90 days.</li> <li>• Access to historical Client Summary Report data for up to one year.</li> </ul> <hr/> <p><b>Audit trail</b> Review total number of logs generated for all device management, configuration, and user management events triggered in the network.</p> <hr/> <p><b>Alerts and events</b> Unified dashboard view of generated alerts and events pertaining to device provisioning, configuration, and user management.</p>
<b>AIOps</b>	<p><b>AI Search</b> GenAI-powered search engine trained on multiple large language models (LLM) that enables operators to quickly and easily find relevant information related to network devices or status (e.g., gateway down), configuration and troubleshooting tips, and more. Search results based on user intent and informed by the vast HPE Aruba Networking data lake. Search-driven navigation and LLM-generated summarizations streamline the process, reducing time spent clicking through menus or documents.</p> <hr/> <p><b>AI Insights</b> Automatically detect a broad range of anomalies observed at the wireless gateway level with specific details on the occurrences for faster troubleshooting.</p> <ul style="list-style-type: none"> <li>• Includes availability insights such as Gateway Has High Memory Usage or High CPU Usage.</li> <li>• Class and company baselines are also supported.</li> </ul> <hr/> <p><b>AI Assist</b> Dynamically runs CLI show commands and generates logs that can be used to troubleshoot gateway-related issues.</p>



**Table 3.** Features for HPE Aruba Networking Central WLAN gateway subscriptions

Feature category	Feature
Troubleshooting	<b>Troubleshooting tools</b> <ul style="list-style-type: none"> <li>• Network Check—Run diagnostic checks on networks and troubleshoot client connectivity issues.</li> <li>• CLI Commands—Perform network health check at an advanced level using command categories.</li> </ul>
	<b>Live events</b> Information required to troubleshoot issues related to a client issue in real time.
API	<b>Northbound (NB) API</b> 5000 API calls/day base limit which dynamically increases based on the subscribed device count.
	<b>Streaming API</b> Enables you to subscribe to a select set of topics, instead of polling the NB API to get continuous state and stats messages. Also enables you to write value-added applications based on the aggregated context (e.g., get notified of events such as the UP and DOWN status of devices).
Security	<b>HPE Aruba Networking Central NetConductor Fabric Wizard</b> Enables the creation of EVPN/VXLAN overlays with an intuitive, graphical user interface to aid the adoption of role-based policies and Dynamic Segmentation at global scale with distributed enforcement for campus, SD-Branch and data center environments. Centralized policy enforcement can also be used for smaller locations with the help of firewall and gateways.

**Table 4.** HPE Aruba Networking wireless gateway subscription SKUs

SKU	Description
<b>Wireless gateway subscription SKUs</b>	
SOU81AAE	HPE Aruba Networking 90/70xx Gateway WLAN Advanced 1-year Subscription E-STU
SOU82AAE	HPE Aruba Networking 90/70xx Gateway WLAN Advanced 3-year Subscription E-STU
SOU83AAE	HPE Aruba Networking 90/70xx Gateway WLAN Advanced 5-year Subscription E-STU
SOU84AAE	HPE Aruba Networking 90/70xx Gateway WLAN Advanced 7-year Subscription E-STU
SOU85AAE	HPE Aruba Networking 90/70xx Gateway WLAN Advanced 10-year Subscription E-STU
SOU91AAE	HPE Aruba Networking 91xx Gateway WLAN Advanced 1-year Subscription E-STU
SOU92AAE	HPE Aruba Networking 91xx Gateway WLAN Advanced 3-year Subscription E-STU
SOU93AAE	HPE Aruba Networking 91xx Gateway WLAN Advanced 5-year Subscription E-STU
SOU94AAE	HPE Aruba Networking 91xx Gateway WLAN Advanced 7-year Subscription E-STU
SOU95AAE	HPE Aruba Networking 91xx Gateway WLAN Advanced 10-year Subscription E-STU
SOV01AAE	HPE Aruba Networking 92/72xx Gateway WLAN Advanced 1-year Subscription E-STU
SOV02AAE	HPE Aruba Networking 92/72xx Gateway WLAN Advanced 3-year Subscription E-STU
SOV03AAE	HPE Aruba Networking 92/72xx Gateway WLAN Advanced 5-year Subscription E-STU



**Table 4.** HPE Aruba Networking wireless gateway subscription SKUs

SKU	Description
<b>Wireless gateway subscription SKUs</b>	
SOV04AAE	HPE Aruba Networking 92/72xx Gateway WLAN Advanced 7-year Subscription E-STU
SOV05AAE	HPE Aruba Networking 92/72xx Gateway WLAN Advanced 10-year Subscription E-STU
SOU96AAE	HPE Aruba Networking 91xx Gateway WLAN Advanced plus Security 1-year Subscription E-STU
SOU97AAE	HPE Aruba Networking 91xx Gateway WLAN Advanced plus Security 3-year Subscription E-STU
SOU98AAE	HPE Aruba Networking 91xx Gateway WLAN Advanced plus Security 5-year Subscription E-STU
SOU99AAE	HPE Aruba Networking 91xx Gateway WLAN Advanced plus Security 7-year Subscription E-STU
SOV00AAE	HPE Aruba Networking 91xx Gateway WLAN Advanced plus Security 10-year Subscription E-STU
SOV06AAE	HPE Aruba Networking 92xx Gateway WLAN Advanced plus Security 1-year Subscription E-STU
SOV07AAE	HPE Aruba Networking 92xx Gateway WLAN Advanced plus Security 3-year Subscription E-STU
SOV08AAE	HPE Aruba Networking 92xx Gateway WLAN Advanced plus Security 5-year Subscription E-STU
SOV09AAE	HPE Aruba Networking 92xx Gateway WLAN Advanced plus Security 7-year Subscription E-STU
SOV10AAE	HPE Aruba Networking 92xx Gateway WLAN Advanced plus Security 10-year Subscription E-STU
R4G90AAE	HPE Aruba Networking Central WLAN Gateway Foundational 1 year Subscription E-STU
R4G91AAE	HPE Aruba Networking Central WLAN Gateway Foundational 3 year Subscription E-STU
R4G92AAE	HPE Aruba Networking Central WLAN Gateway Foundational 5 year Subscription E-STU
R4G93AAE	HPE Aruba Networking Central WLAN Gateway Foundational 7 year Subscription E-STU
R4G94AAE	HPE Aruba Networking Central WLAN Gateway Foundational 10 year Subscription E-STU
R4G90AAS	HPE Aruba Networking Central WLAN Gateway 1 year Subscription SaaS
R4G91AAS	HPE Aruba Networking Central WLAN Gateway 3 year Subscription SaaS
R4G92AAS	HPE Aruba Networking Central WLAN Gateway 5 year Subscription SaaS
R4G93AAS	HPE Aruba Networking Central WLAN Gateway 7 year Subscription SaaS
R4G94AAS	HPE Aruba Networking Central WLAN Gateway 10 year Subscription SaaS



## HPE Aruba Networking Central subscriptions for HPE Aruba Networking switches

Table 5 provides a mapping of available features that are supported in the Foundational and Advanced subscription tiers for all supported HPE Aruba Networking switches. Please refer to the [HPE Aruba Networking Central Help Center](#) for a list of supported switches.

Switch subscriptions are divided into sub-categories based on the family of switches and their respective number of ports, advanced routing features, and required software support, among other factors.

These subscriptions apply to both HPE Aruba Networking CX switches and AOS-S switches, though there are some management feature differences, as outlined in the table below.

**Table 5.** Features for HPE Aruba Networking Central switch Foundational and Advanced subscriptions

Features	Switch support	Foundational	Advanced
<b>Deployment and configuration</b>			
<b>UI- and template-based group configuration</b>			
Simplify deployment with template-based configuration and streamlined provisioning of devices or groups of devices. Easily configure a wide range of parameters including system properties, SNMP, ports and link aggregation, loop prevention, VLANs, interfaces, access control, bridging, and more. Refer <a href="#">Configuring AOS-S switches</a> and <a href="#">Configuring AOS-CX switches</a> for more information.	AOS-CX and AOS-S	✓	✓
<b>Auto-Commit</b>			
Apply configuration changes instantly with the auto-commit state enabled.	AOS-CX and AOS-S	✓	✓



**Table 5.** Features for HPE Aruba Networking Central switch Foundational and Advanced subscriptions

Features	Switch support	Foundational	Advanced
<b>Deployment and configuration</b>			
<b>UI- and template-based group configuration</b>			
Simplify deployment with template-based configuration and streamlined provisioning of devices or groups of devices. Easily configure a wide range of parameters including system properties, SNMP, ports and link aggregation, loop prevention, VLANs, interfaces, access control, bridging, and more. Refer <a href="#">Configuring AOS-S switches</a> and <a href="#">Configuring AOS-CX switches</a> for more information.	AOS-CX and AOS-S	✓	✓
<b>Auto-Commit</b>			
Apply configuration changes instantly with the auto-commit state enabled.	AOS-CX and AOS-S	✓	✓
<b>Configuration audit</b>			
Review device configuration changes including errors and device-level overrides on an audit dashboard.	AOS-CX and AOS-S	✓	✓
<b>Multi-editor configuration</b>			
Update multiple switches at the same time, validate changes are conformant, and instantly push them across all target devices. Also includes express configs for common changes that require only a few simple mouse clicks to validate and deploy.	AOS-CX	✓	✓
<b>Port profiles</b>			
Extensive port configuration applied on multiple switches at once with port profiles.	AOS-CX	✓	✓
<b>Stack management</b>			
Simplify management of an AOS-CX Virtual Switching Framework (VSF) stack, with support for onboarding both pre-configured and new stacks, adding/removing members, UI- and template-based configuration, as well as monitoring and troubleshooting.	AOS-CX	✓	✓
<b>HPE Aruba Networking Central NetConductor Network Wizard</b>			
A guided set-up that simplifies and streamlines creation of campus and datacenter underlay networks comprising of CX switches with minimum user inputs, helping IT teams build networks with minimum effort.	AOS-CX		✓
<b>Monitoring and reporting</b>			
<b>Network health and summary dashboards</b>			
Review wired network performance to gain an overall view of the health status of all switches and connected clients.	AOS-CX and AOS-S	✓	✓
<b>Network topology</b>			
Graphical representation of the site network layout with details of all devices being managed, including AOS-S switches, AOS-CX switches, HPE Aruba Networking APs, HPE Aruba Networking gateways, and third-party devices.	AOS-CX and AOS-S	✓	✓
<b>Switch monitoring</b>			
Granular insights into the performance, status, and utilization of all components of the switch, including ports, PoE, VLANs, LAGs, and more.	AOS-CX and AOS-S	✓	✓
<b>NAE agent/monitoring support</b>			
Create and deploy monitoring agents using the HPE Aruba Networking Network Analytics Engine (NAE) that is built into every select HPE Aruba Networking CX switches. View the aggregated status of the NAE agents running on each switch from HPE Aruba Networking Central for additional monitoring and troubleshooting support.	AOS-CX	✓	✓
<b>Client list and details</b>			
Review unified list of all clients that are connected to access points, switches, or gateways in the network with performance status, connection status, and more.	AOS-CX and AOS-S	✓	✓



**Table 5.** Features for HPE Aruba Networking Central switch Foundational and Advanced subscriptions

Features	Switch support	Foundational	Advanced
<p><b>Data access</b></p> <ul style="list-style-type: none"> <li>• Access to all the above monitoring data for up to 30 days</li> <li>• Access to reporting data for up to 90 days</li> <li>• Access to historical Client Summary Report data for up to one year</li> </ul>	AOS-CX and AOS-S	✓	✓
<p><b>Audit trail</b></p> <p>Review total number of logs generated for all device management, configuration, and user management events triggered in the network.</p>	AOS-CX and AOS-S	✓	✓
<p><b>Alerts and events</b></p> <p>Unified dashboard view of generated alerts and events pertaining to device provisioning, configuration, and user management.</p>	AOS-CX and AOS-S	✓	✓
<b>AIOps</b>			
<p><b>AI Search</b></p> <p>GenAI-powered search engine trained on multiple large language models (LLM) that enables operators to quickly and easily find relevant information related to network devices or status (e.g., switch down), configuration and troubleshooting tips, and more. Search results based on user intent and informed by the vast HPE Aruba Networking data lake. Search-driven navigation and LLM-generated summarizations streamline the process, reducing time spent clicking through menus or documents.</p>	AOS-CX and AOS-S	✓	✓
<p><b>AI Insights</b></p> <p>Automatically detect a broad range of anomalies observed at the switch, connectivity, and client level with specific details on the occurrences for faster troubleshooting. Examples for HPE Aruba Networking switches include: High CPU Utilization, High Memory Usage, High Port Flaps, High Port Errors, and PoE Errors.</p>	AOS-CX and AOS-S	✓	✓
<b>Troubleshooting</b>			
<p><b>Troubleshooting tools</b></p> <ul style="list-style-type: none"> <li>• Network Check—Run diagnostic checks on networks and troubleshoot client connectivity issues.</li> <li>• CLI Commands—Perform network health check at an advanced level using command categories.</li> <li>• Device Check—Run diagnostic checks on individual switches to test components such as cabling, interfaces, PoE, and the physical location of the switch.</li> </ul>	AOS-CX and AOS-S	✓	✓
<p><b>Live events</b></p> <p>Information required to troubleshoot issues related to a client, a switch, or a site in real time.</p>	AOS-S	✓	✓
<p><b>Live Packet Capture (PCAP)</b></p> <p>Allows users to interact and launch a targeted packet capture on a client connected to a specific switch to measure application response time to determine quality of experience for end users.</p>	AOS-S	✓	✓
<b>Security</b>			
<p><b>User-Based Tunneling (UBT) for dynamic segmentation</b></p> <p>Allows tunneling of wired users traffic from the switches to the gateway based on an assigned user role, to enforce deep packet inspection and firewall functionality, application visibility, and bandwidth control.</p>	AOS-CX and AOS-S	✓	✓



**Table 5.** Features for HPE Aruba Networking Central switch Foundational and Advanced subscriptions

Features	Switch support	Foundational	Advanced
<b>Client insights</b> Enables network and security administrators to discover, monitor, and automatically classify new and existing devices that connect to a network.	AOS-CX	✓	✓
<b>Cloud authentication</b> Provides a seamless, secure way to onboard and authenticate clients and users to wired networks by integrating with common cloud identity stores such as Google Workspace and Microsoft Azure Directory.	AOS-CX	✓	✓
<b>HPE Aruba Networking Central NetConductor Fabric Wizard</b> Enables the creation of EVPN/VXLAN overlays with an intuitive, graphical user interface to aid the adoption of role-based policies at global scale with distributed enforcement for campus, branch and data center environments, with the choice of multiple overlay designs.	AOS-CX		✓
<b>API</b>			
<b>Northbound (NB) API</b> 5000 API calls/day base limit which dynamically increases based on the subscribed device count.	AOS-CX and AOS-S	✓	✓
<b>Streaming API</b> Enables you to subscribe to a select set of topics, instead of polling the NB API to get continuous state and stats messages. Also enables you to write value-added applications based on the aggregated context (e.g., get notified of events such as the UP and DOWN status of devices).	AOS-CX and AOS-S		✓

**Note:** Some feature differences may exist across the different switch series that are supported in HPE Aruba Networking Central, and the latest software releases for the AOS-S and AOS-CX operating systems may be required. Contact your HPE Aruba Networking account team for additional details.

### Use-cases for HPE Aruba Networking Central switch Advanced licenses

Enhanced protection and automated configuration with HPE Aruba Networking Central NetConductor (available with AOS-CX): automates network configuration by identifying network topologies, orchestrates intent-based policy globally, provides improved discovery, profiling, network access and authentication control of all connected clients across campus and data-center environments. Selecting Advanced subscriptions (AOS-S and AOS-CX) enables API Streaming, which provides a continuous stream of data that includes device statistics and state changes for developing dynamic and interactive applications. Telemetry from HPE Aruba Networking Central can also be shared with third party solutions enabling IT teams to automatically trigger actions based on certain events or conditions.

**Note:** Features included in the [CX Advanced Feature Pack](#) require Central switch Advanced license when managed through Central.

**Table 6.** HPE Aruba Networking Central switch subscription SKUs

Category	Switches
<b>Class-switch mapping</b>	
Class 1	6000 series, 6100 series, 4100i, 2530 series, 2540 series, 6200-8 port, 2930-8 port & 12 port
Class 2	All 24 & 48 port 2930 series, All 24 & 48 port 6200 series, All 6300L series
Class 3	All 3810 series, All 6300 F&M series
Class 4	All 5400 and 6400 series
Class 5	All 8100 series, All 8320 series, All 8325 series, All 8360 series, All 8400 series, All 9300 series, All 10000 series



**Table 6.** HPE Aruba Networking Central switch subscription SKUs

SKU	Description
<b>Foundational switch subscription SKUs</b>	
Q9Y68AAE	HPE Aruba Networking Central Switch Class 1 Foundational 1 year Subscription E-STU
Q9Y69AAE	HPE Aruba Networking Central Switch Class 1 Foundational 3 year Subscription E-STU
Q9Y70AAE	HPE Aruba Networking Central Switch Class 1 Foundational 5 year Subscription E-STU
Q9Y71AAE	HPE Aruba Networking Central Switch Class 1 Foundational 7 year Subscription E-STU
Q9Y72AAE	HPE Aruba Networking Central Switch Class 1 Foundational 10 year Subscription E-STU
Q9Y73AAE	HPE Aruba Networking Central Switch Class 2 Foundational 1 year Subscription E-STU
Q9Y74AAE	HPE Aruba Networking Central Switch Class 2 Foundational 3 year Subscription E-STU
Q9Y75AAE	HPE Aruba Networking Central Switch Class 2 Foundational 5 year Subscription E-STU
Q9Y76AAE	HPE Aruba Networking Central Switch Class 2 Foundational 7 year Subscription E-STU
Q9Y77AAE	HPE Aruba Networking Central Switch Class 2 Foundational 10 year Subscription E-STU
Q9Y78AAE	HPE Aruba Networking Central Switch Class 3 Foundational 1 year Subscription E-STU
Q9Y79AAE	HPE Aruba Networking Central Switch Class 3 Foundational 3 year Subscription E-STU
Q9Y80AAE	HPE Aruba Networking Central Switch Class 3 Foundational 5 year Subscription E-STU
Q9Y81AAE	HPE Aruba Networking Central Switch Class 3 Foundational 7 year Subscription E-STU
R3K02AAE	HPE Aruba Networking Central Switch Class 3 Foundational 10 year Subscription E-STU
R8L80AAE	HPE Aruba Networking Central Switch Class 4 Foundational 1 year Subscription E-STU
R8L81AAE	HPE Aruba Networking Central Switch Class 4 Foundational 3 year Subscription E-STU
R8L82AAE	HPE Aruba Networking Central Switch Class 4 Foundational 5 year Subscription E-STU
R8L83AAE	HPE Aruba Networking Central Switch Class 4 Foundational 7 year Subscription E-STU
R8L84AAE	HPE Aruba Networking Central Switch Class 4 Foundational 10 year Subscription E-STU
R3K03AAE	HPE Aruba Networking Central Switch Class 5 Foundational 1 year Subscription E-STU
R3K04AAE	HPE Aruba Networking Central Switch Class 5 Foundational 3 year Subscription E-STU
R3K05AAE	HPE Aruba Networking Central Switch Class 5 Foundational 5 year Subscription E-STU
R3K06AAE	HPE Aruba Networking Central Switch Class 5 Foundational 7 year Subscription E-STU
R3K07AAE	HPE Aruba Networking Central Switch Class 5 Foundational 10 year Subscription E-STU





**Table 6.** HPE Aruba Networking Central switch subscription SKUs

SKU	Description
<b>Advanced switch subscription SKUs</b>	
JZ525AAE	HPE Aruba Networking Central Switch Class 1 Advanced 1 year Subscription E-STU
JZ526AAE	HPE Aruba Networking Central Switch Class 1 Advanced 3 year Subscription E-STU
JZ527AAE	HPE Aruba Networking Central Switch Class 1 Advanced 5 year Subscription E-STU
JZ528AAE	HPE Aruba Networking Central Switch Class 1 Advanced 7 year Subscription E-STU
JZ529AAE	HPE Aruba Networking Central Switch Class 1 Advanced 10 year Subscription E-STU
JZ530AAE	HPE Aruba Networking Central Switch Class 2Advanced 1 year Subscription E-STU
JZ531AAE	HPE Aruba Networking Central Switch Class 2Advanced 3 year Subscription E-STU
JZ532AAE	HPE Aruba Networking Central Switch Class 2 Advanced 5 year Subscription E-STU
JZ533AAE	HPE Aruba Networking Central Switch Class 2 Advanced 7 year Subscription E-STU
JZ534AAE	HPE Aruba Networking Central Switch Class 2 Advanced 10 year Subscription E-STU
JZ535AAE	HPE Aruba Networking Central Switch Class 3 Advanced 1 year Subscription E-STU
JZ536AAE	HPE Aruba Networking Central Switch Class 3 Advanced 3 year Subscription E-STU
JZ537AAE	HPE Aruba Networking Central Switch Class 3 Advanced 5 year Subscription E-STU
JZ538AAE	HPE Aruba Networking Central Switch Class 3 Advanced 7 year Subscription E-STU
JZ539AAE	HPE Aruba Networking Central Switch Class 3 Advanced 10 year Subscription E-STU
S0T66AAE	HPE Aruba Networking Central Switch Class 4 Advanced 1 year Subscription E-STU
S0T68AAE	HPE Aruba Networking Central Switch Class 4 Advanced 3 year Subscription E-STU
S0T70AAE	HPE Aruba Networking Central Switch Class 4 Advanced 5 year Subscription E-STU
S0T72AAE	HPE Aruba Networking Central Switch Class 4 Advanced 7 year Subscription E-STU
S0T74AAE	HPE Aruba Networking Central Switch Class 4 Advanced 10 year Subscription E-STU
JZ540AAE	HPE Aruba Networking Central Switch Class 5 Advanced 1 year Subscription E-STU
JZ541AAE	HPE Aruba Networking Central Switch Class 5 Advanced 3 year Subscription E-STU
JZ542AAE	HPE Aruba Networking Central Switch Class 5 Advanced 5 year Subscription E-STU
JZ543AAE	HPE Aruba Networking Central Switch Class 5 Advanced 7 year Subscription E-STU
JZ544AAE	HPE Aruba Networking Central Switch Class 5 Advanced 10 year Subscription E-STU



**Table 6.** HPE Aruba Networking Central switch subscription SKUs

SKU	Description
<b>Foundational switch SaaS SKUs</b>	
Q9Y68AAS	HPE Aruba Networking Central Switch Class 1 Foundational 1 year Subscription SaaS
Q9Y69AAS	HPE Aruba Networking Central Switch Class 1 Foundational 3 year Subscription SaaS
Q9Y70AAS	HPE Aruba Networking Central Switch Class 1 Foundational 5 year Subscription SaaS
Q9Y71AAS	HPE Aruba Networking Central Switch Class 1 Foundational 7 year Subscription SaaS
Q9Y72AAS	HPE Aruba Networking Central Switch Class 1 Foundational 10 year Subscription SaaS
Q9Y73AAS	HPE Aruba Networking Central Switch Class 2 Foundational 1 year Subscription SaaS
Q9Y74AAS	HPE Aruba Networking Central Switch Class 2 Foundational 3 year Subscription SaaS
Q9Y75AAS	HPE Aruba Networking Central Switch Class 2 Foundational 5 year Subscription SaaS
Q9Y76AAS	HPE Aruba Networking Central Switch Class 2 Foundational 7 year Subscription SaaS
Q9Y77AAS	HPE Aruba Networking Central Switch Class 2 Foundational 10 year Subscription SaaS
Q9Y78AAS	HPE Aruba Networking Central Switch Class 3 Foundational 1 year Subscription SaaS
Q9Y79AAS	HPE Aruba Networking Central Switch Class 3 Foundational 3 year Subscription SaaS
Q9Y80AAS	HPE Aruba Networking Central Switch Class 3 Foundational 5 year Subscription SaaS
Q9Y81AAS	HPE Aruba Networking Central Switch Class 3 Foundational 7 year Subscription SaaS
R3K02AAS	HPE Aruba Networking Central Switch Class 3 Foundational 10 year Subscription SaaS
R8L80AAS	HPE Aruba Networking Central Switch Class 4 Foundational 1 year Subscription SaaS
R8L81AAS	HPE Aruba Networking Central Switch Class 4 Foundational 3 year Subscription SaaS
R8L82AAS	HPE Aruba Networking Central Switch Class 4 Foundational 5 year Subscription SaaS
R8L83AAS	HPE Aruba Networking Central Switch Class 4 Foundational 7 year Subscription SaaS
R8L84AAS	HPE Aruba Networking Central Switch Class 4 Foundational 10 year Subscription SaaS
R3K03AAS	HPE Aruba Networking Central Switch Class 5 Foundational 1 year Subscription SaaS
R3K04AAS	HPE Aruba Networking Central Switch Class 5 Foundational 3 year Subscription SaaS
R3K05AAS	HPE Aruba Networking Central Switch Class 5 Foundational 5 year Subscription SaaS
R3K06AAS	HPE Aruba Networking Central Switch Class 5 Foundational 7 year Subscription SaaS
R3K07AAS	HPE Aruba Networking Central Switch Class 5 Foundational 10 year Subscription SaaS



**Table 6.** HPE Aruba Networking Central switch subscription SKUs

SKU	Description
<b>Advanced switch SaaS SKUs</b>	
SOW67AAS	HPE Aruba Networking Central Switch Class 1 Advanced 1 year Subscription SaaS
SOW68AAS	HPE Aruba Networking Central Switch Class 1 Advanced 3 year Subscription SaaS
SOW69AAS	HPE Aruba Networking Central Switch Class 1 Advanced 5 year Subscription SaaS
SOW70AAS	HPE Aruba Networking Central Switch Class 1 Advanced 7 year Subscription SaaS
SOW71AAS	HPE Aruba Networking Central Switch Class 1 Advanced 10 year Subscription SaaS
SOW72AAS	HPE Aruba Networking Central 62/29xx Switch Advanced 1 year Subscription SaaS
SOW73AAS	HPE Aruba Networking Central 62/29xx Switch Advanced 3 year Subscription SaaS
SOW74AAS	HPE Aruba Networking Central 62/29xx Switch Advanced 5 year Subscription SaaS
SOW75AAS	HPE Aruba Networking Central 62/29xx Switch Advanced 7 year Subscription SaaS
SOW76AAS	HPE Aruba Networking Central 62/29xx Switch Advanced 10 year Subscription SaaS
SOW77AAS	HPE Aruba Networking Central 63/38xx Switch Advanced 1 year Subscription SaaS
SOW78AAS	HPE Aruba Networking Central 63/38xx Switch Advanced 3 year Subscription SaaS
SOW79AAS	HPE Aruba Networking Central 63/38xx Switch Advanced 5 year Subscription SaaS
SOW80AAS	HPE Aruba Networking Central 63/38xx Switch Advanced 7 year Subscription SaaS
SOW81AAS	HPE Aruba Networking Central 63/38xx Switch Advanced 10 year Subscription SaaS
SOW82AAS	HPE Aruba Networking Central 64xx/54xx Switch Advanced 1 year Subscription SaaS
SOW83AAS	HPE Aruba Networking Central 64xx/54xx Switch Advanced 3 year Subscription SaaS
SOW84AAS	HPE Aruba Networking Central 64xx/54xx Switch Advanced 5 year Subscription SaaS
SOW85AAS	HPE Aruba Networking Central 64xx/54xx Switch Advanced 7 year Subscription SaaS
SOW86AAS	HPE Aruba Networking Central 64xx/54xx Switch Advanced 10 year Subscription SaaS
SOW87AAS	HPE Aruba Networking Central 8/9/10xxx Switch Advanced 1 year Subscription SaaS
SOW88AAS	HPE Aruba Networking Central 8/9/10xxx Switch Advanced 3 year Subscription SaaS
SOW89AAS	HPE Aruba Networking Central 8/9/10xxx Switch Advanced 5 year Subscription SaaS
SOW45AAS	HPE Aruba Networking Central 8/9/10xxx Switch Advanced 7 year Subscription SaaS
SOW46AAS	HPE Aruba Networking Central 8/9/10xxx Switch Advanced 10 year Subscription SaaS



## HPE Aruba Networking Central subscriptions for HPE Aruba Networking EdgeConnect SD-Branch gateways

The EdgeConnect SD-Branch solution is comprised of an HPE Aruba Networking Central SD-WAN software subscription license for each 70xx, 90xx, or 72xx branch gateway, as well as the headend gateway/concentrator. The HPE Aruba Networking Central SD WAN Foundational, Foundational Base, and Advanced subscription licenses are described below. The Foundational Base license is applicable for branch gateways and not for VPN concentrators (VPNC).

For all 70xx and 72xx gateways, the Foundational license does not have a capacity limit (i.e., client device limit). However, for the 7005, 7008, 9004 and 9012 gateways, a Foundational Base Capacity license is available. The 7005, 7008, 9004 and 9012 Foundational Base license is limited to 75 client devices in the branch.

**Table 7.** HPE Aruba Networking Central subscriptions and platform mapping for HPE Aruba Networking EdgeConnect SD-branch gateways

Foundational	Foundational Base	Foundational + security	Foundational Base + security	Advanced	Advanced + security
• 70xx	• 7005	• 90xx	• 9004	• 70xx	• 90xx
• 72xx	• 7008	• 91xx	• 9004-LTE	• 72xx	• 91xx
• 90xx	• 9004	• 92xx	• 9012	• 90xx	• 92xx
• 91xx	• 9004-LTE		(Limited to 75 client concurrent endpoints in the branch)	• 91xx	
• 92xx	• 9012 (Limited to 75 client concurrent endpoints in the branch)			• 92xx	

**Table 8.** HPE Aruba Networking Central management features for HPE Aruba Networking EdgeConnect SD-branch gateways (by license tier)

Features	Foundational	Foundational Base	Foundational + security	Foundational Base + security	Advanced	Advanced + security
<b>Configuration</b>						
<b>Branch gateway and VPNC management</b>						
Enables onboarding, configuration, deployment, monitoring, and general management of HPE Aruba Networking gateways and VPN concentrators (VPNCs).	✓	✓ <small>Note: Applicable for branch gateways only, not for VPNCs</small>	✓	✓	✓	✓
<b>Group-based configurations</b>						
Simplify deployments with hierarchical group/device based configurations to streamline provisioning and operations.	✓	✓	✓	✓	✓	✓
<b>Configuration audit</b>						
Review device configuration changes including errors and device-level overrides on an audit dashboard.	✓	✓	✓	✓	✓	✓



**Table 8.** HPE Aruba Networking Central management features for HPE Aruba Networking EdgeConnect SD-branch gateways (by license tier)

Features	Foundational	Foundational Base	Foundational + security	Foundational Base + security	Advanced	Advanced + security
<b>SD-LAN</b>						
See table 3 in the wireless gateway section for a list of SD-LAN features. The SD-LAN features listed there also apply to EdgeConnect SD-Branch deployments.						
<b>SD-WAN</b>						
<b>IPsec VPN</b>						
Ensures data flows between networks are encrypted. When configured, the IPsec tunnel to the gateway secures corporate data.	✓	✓	✓	✓	✓	✓
<b>Note:</b> You can also configure an IPsec tunnel from a virtual gateway using HPE Aruba Networking Central.						
<b>Client VPN (VIA)</b>						
Software download for client devices that enables secure connectivity to enterprise networks by terminating traffic directly to an HPE Aruba Networking virtual or headend gateway. Within HPE Aruba Networking Central, operators get full visibility into the connection status, location, data path, and more for monitoring and troubleshooting.	✓	✓	✓	✓	✓	✓
<b>Routing</b>						
Traffic can be routed across multiple private or public WAN uplinks based on application type and link health, device profile, user role, and destination. Supported protocols include BGP, OSPF and static routes.	✓	✓	✓	✓	✓	✓
<b>Orchestration: tunnel, route, cloud connectivity</b>						
Provides end-to-end orchestration to easily distribute routes and build scalable and secure VPN tunnels on-demand. The orchestrator service also simplifies the deployment of virtual gateways within AWS and Microsoft Azure public cloud infrastructure by automating cloud discovery, onboarding, and management.	✓	✓	✓	✓	✓	✓
<b>Dynamic path steering (DPS)</b>						
Intelligently steers network traffic across multiple WAN uplinks. Configured policies determine which WAN link each application should use based on SLAs for users, roles, and destinations, and leverages loss, latency, jitter, and utilization metrics that are updated every few seconds.	✓	✓	✓	✓	✓	✓



**Table 8.** HPE Aruba Networking Central management features for HPE Aruba Networking EdgeConnect SD-branch gateways (by license tier)

Features	Foundational	Foundational Base	Foundational + security	Foundational Base + security	Advanced	Advanced + security
<p><b>Link redundancy</b> Helps ensure high availability so that if one WAN link fails, the other takes over and restores traffic forwarding for continuity of operations.</p>	✓	✓	✓	✓	✓	✓
<p><b>High availability (active-standby or active-active)</b> Provides a highly available network, where the data center, VPNC, and gateway failover redundancy features allow network administrators to significantly reduce downtime and traffic disruptions. Supports active-standby or active-active configuration.</p>	✓	✓	✓	✓	✓	✓
<p><b>Application-based policies</b> Assists in deep packet inspection of application usage by clients. Using this configuration, you can define applications, security, and service aliases, as well as configure Access Control Lists (ACLs) to restrict user access to an application or application category.</p>	✓	✓	✓	✓	✓	✓
<p><b>Full SD-LAN control</b> Displays a graphical representation of the LAN link availability of a Branch Gateway, and also provides a summary of all the LAN interfaces and port details.</p>	✓	✓	✓	✓	✓	✓
<b>Monitoring and reporting</b>						
<p><b>Network health and summary dashboards</b> Provides at-a-glance views of the health status of all sites, links, and network devices, including APs, switches, gateways, and connected clients.</p>	✓	✓	✓	✓	✓	✓
<p><b>Network topology</b> Graphical representation of the site network layout with details of all devices being managed, including AOS-S switches, AOS-CX switches, HPE Aruba Networking APs, HPE Aruba Networking gateways, and third-party devices.</p>	✓	✓	✓	✓	✓	✓



**Table 8.** HPE Aruba Networking Central management features for HPE Aruba Networking EdgeConnect SD-branch gateways (by license tier)

Features	Foundational	Foundational Base	Foundational + security	Foundational Base + security	Advanced	Advanced + security
<p><b>Client list and device details</b> Review unified list of all clients that are connected to access points, switches, or gateways in the network with performance status, connection status and more.</p>	✓	✓	✓	✓	✓	✓
<p><b>Application visibility</b> Allows for the creation of application-specific firewall policies and includes features such as deep packet inspection (DPI) and application-level monitoring to assess user-impacting issues.</p>	✓	✓	✓	✓	✓	✓
<p><b>Web Content Classification (WebCC)</b> Web Content Classification, policy, and reputation service that helps enforce acceptable network usage policies, including blocking or rate-limiting certain connections.</p>	✓	✓	✓	✓	✓	✓
<p><b>Data access</b></p> <ul style="list-style-type: none"> <li>• Access to all monitoring and reporting data for up to 90 days</li> <li>• Access to historical Client Summary Report data for up to one year.</li> </ul>	✓	✓	✓	✓	✓	✓
<p><b>Audit trail</b> Review total number of logs generated for all device management, configuration, and user management events triggered in the network.</p>	✓	✓	✓	✓	✓	✓
<p><b>Alerts and events</b> Unified dashboard view of generated alerts and events pertaining to device provisioning, configuration, and user management.</p>	✓	✓	✓	✓	✓	✓
<b>AIOps</b>						



**Table 8.** HPE Aruba Networking Central management features for HPE Aruba Networking EdgeConnect SD-branch gateways (by license tier)

Features	Foundational	Foundational Base	Foundational + security	Foundational Base + security	Advanced	Advanced + security
<p><b>AI Search</b></p> <p>GenAI-powered search engine trained on multiple large language models (LLM) that enables operators to quickly and easily find relevant information related to network devices or status (e.g., poor WAN connectivity), configuration and troubleshooting tips, and more. Search results based on user intent and informed by the vast HPE Aruba Networking data lake. Search-driven navigation and LLM-generated summarizations streamline the process, reducing time spent clicking through menus or documents.</p>	✓	✓	✓	✓	✓	✓
<p><b>AI Insights</b></p> <p>Automatically detect a broad range of anomalies observed at the gateway, WAN link, and client level with specific details on the occurrences for faster troubleshooting. Examples include: Gateway Down, VPNC Down, Tunnel Down, High CPU Utilization, High Memory Utilization, Class and company baselines are also supported.</p>	✓	✓	✓	✓	✓	✓
<p><b>AI Insights (advanced)</b></p> <p>Advanced WAN insights include:</p> <ul style="list-style-type: none"> <li>• Underperforming WAN link in use.</li> <li>• WAN link underperforming compared to peers.</li> </ul>					✓	✓
<p><b>AI Assist</b></p> <p>Dynamically runs CLI show commands and generates logs that can be used to troubleshoot gateway-related issues.</p>	✓	✓	✓	✓	✓	✓
<p><b>AI Assist (advanced)</b></p> <p>Option that automatically notifies HPE Aruba Networking TAC and sends the generated logs for accelerated support case management.</p>					✓	✓
<b>Troubleshooting</b>						
<b>Troubleshooting tools</b>						
<ul style="list-style-type: none"> <li>• Network check—run diagnostic checks on networks and troubleshoot client connectivity issues.</li> <li>• CLI commands—perform network health check at an advanced level using command categories.</li> </ul>	✓	✓	✓	✓	✓	✓





**Table 8.** HPE Aruba Networking Central management features for HPE Aruba Networking EdgeConnect SD-branch gateways (by license tier)

Features	Foundational	Foundational Base	Foundational + security	Foundational Base + security	Advanced	Advanced + security
<b>Security</b>						
<b>Stateful firewall</b>						
Provide stateful inspection of packets for an additional layer of security by tracking the state of network connections and using the state information from previous communications to monitor and control new communication attempts.	✓	✓	✓	✓	✓	✓
<b>Web content filtering</b>						
Enhances branch security by providing real-time web content and reputation filtering. Allows you to classify website content based on reputation and take measures to block malicious sites.	✓	✓	✓	✓	✓	✓
<b>Intrusion detection and prevention</b>						
Monitors, detects, and prevents threats coming via inbound or outbound traffic, adding an extra layer of security that focuses on users, applications, and network connections.			✓	✓		✓
<b>Anti-Malware</b>						
Anti-malware is built into supported HPE Aruba Networking gateways for additional network protection by scanning, detecting, and preventing threats.			✓	✓		✓
<b>Role-based access policy</b>						
Determines client access based on the user roles assigned to a client. Once the role is assigned, traffic and security policies are applied to devices based on the role.	✓	✓	✓	✓	✓	✓
<b>Security dashboard</b>						
Provides IT teams with network-wide visibility, multi-dimensional threat metrics, threat intelligence data, correlation and incident management.			✓	✓		✓
<b>SIEM integration</b>						
Threat events can be streamed to Security Information and Events Management (SIEM) systems such as Splunk to provide advanced visibility and monitoring.			✓	✓		✓



**Table 8.** HPE Aruba Networking Central management features for HPE Aruba Networking EdgeConnect SD-branch gateways (by license tier)

Features	Foundational	Foundational Base	Foundational + security	Foundational Base + security	Advanced	Advanced + security
<b>Client insights</b>						
Enables network and security administrators to discover, monitor, and automatically classify new and existing devices that connect to a network Foundational License includes:	✓	✓	✓	✓	✓	✓
<ul style="list-style-type: none"> <li>• Basic client MAC Classification based on telemetry data</li> <li>• Client Family, Client Category, Client OS</li> <li>• ML-based client classification</li> <li>• Cloud Auth Integration</li> </ul>						
<b>HPE Aruba Networking Central NetConductor Fabric Wizard</b>						
Enables an automated mechanism for gateways to exchange source role information to create role to role policies across the SD-WAN environment.					✓	✓
<b>Services</b>						
<b>SaaS express</b>						
Discovers SaaS application servers, continuously monitors the health of servers and WAN links, and dynamically steers traffic to the best-available server to improve performance and user experience; includes a drill-down dashboard and Quality of Experience score so IT can analyze SaaS performance issues.					✓	✓
<b>API</b>						
<b>Northbound (NB) API</b>						
5000 API calls/day base limit which dynamically increases based on the subscribed device count.	✓	✓	✓	✓	✓	✓
<b>Streaming API</b>						
Enables you to subscribe to a select set of services, instead of polling the NB API to get an aggregated state. Also enables you to write value-added applications based on the aggregated context (e.g., get notified of events such as the UP and DOWN status of devices).					✓	✓



**Table 9.** SD-WAN Foundational subscription SKUs and descriptions

SKU	Description
<b>HPE Aruba Networking Foundational 70XX, 72XX, 90XX, 91XX, 92XX</b>	
JZ118AAE	HPE Aruba Networking 90/70xx Gateway Foundational 1yr Subscription E-STU
JZ119AAE	HPE Aruba Networking 90/70xx Gateway Foundational 3yr Subscription E-STU
JZ120AAE	HPE Aruba Networking 90/70xx Gateway Foundational 5yr Subscription E-STU
ROG52AAE	HPE Aruba Networking 90/70xx Gateway Foundational 7yr Subscription E-STU
ROG53AAE	HPE Aruba Networking 90/70xx Gateway Foundational 10yr Subscription E-STU
SOB88AAE	HPE Aruba Networking 91xx Gateway Foundational 1-year Subscription E-STU
SOB89AAE	HPE Aruba Networking 91xx Gateway Foundational 3-year Subscription E-STU
SOB90AAE	HPE Aruba Networking 91xx Gateway Foundational 5-year Subscription E-STU
SOB91AAE	HPE Aruba Networking 91xx Gateway Foundational 7-year Subscription E-STU
SOB92AAE	HPE Aruba Networking 91xx Gateway Foundational 10-year Subscription E-STU
JZ195AAE	HPE Aruba Networking 92/72xx Gateway Foundational 1yr Subscription E-STU
JZ196AAE	HPE Aruba Networking 92/72xx Gateway Foundational 3yr Subscription E-STU
JZ197AAE	HPE Aruba Networking 92/72xx Gateway Foundational 5yr Subscription E-STU
ROG60AAE	HPE Aruba Networking 92/72xx Gateway Foundational 7yr Subscription E-STU
ROG61AAE	HPE Aruba Networking 92/72xx Gateway Foundational 10yr Subscription E-STU
JZ118AAS	HPE Aruba Networking 90/70xx Gateway Foundational 1yr Sub SaaS
JZ119AAS	HPE Aruba Networking 90/70xx Gateway Foundational 3yr Sub SaaS
JZ120AAS	HPE Aruba Networking 90/70xx Gateway Foundational 5yr Sub SaaS
ROG52AAS	HPE Aruba Networking 90/70xx Gateway Foundational 7yr Sub SaaS
ROG53AAS	HPE Aruba Networking 90/70xx Gateway Foundational 10yr Sub SaaS
JZ195AAS	HPE Aruba Networking 92/72xx Gateway Foundational 1yr Sub SaaS
JZ196AAS	HPE Aruba Networking 92/72xx Gateway Foundational 3yr Sub SaaS
JZ197AAS	HPE Aruba Networking 92/72xx Gateway Foundational 5yr Sub SaaS
ROG61AAS	HPE Aruba Networking 92/72xx Gateway Foundational 10yr Sub SaaS



**Table 10.** SD-WAN Foundational Base subscription SKUs and descriptions

SKU	Description
<b>Foundational Base: 7005, 7008, 9004, 9004-LTE, 9012</b>	
JZ124AAE	HPE Aruba Networking 90/70xx Gateway Foundational Base Capacity 1yr Subscription E-STU
JZ125AAE	HPE Aruba Networking 90/70xx Gateway Foundational Base Capacity 3yr Subscription E-STU
JZ126AAE	HPE Aruba Networking 90/70xx Gateway Foundational Base Capacity 5yr Subscription E-STU
ROG56AAE	HPE Aruba Networking 90/70xx Gateway Foundational Base Capacity 7yr Subscription E-STU
ROG57AAE	HPE Aruba Networking 90/70xx Gateway Foundational Base Capacity 10yr Subscription E-STU
JZ124AAS	HPE Aruba Networking 90/70xx Gateway Foundational Base Capacity 1yr Sub SaaS
JZ125AAS	HPE Aruba Networking 90/70xx Gateway Foundational Base Capacity 3yr Sub SaaS
JZ126AAS	HPE Aruba Networking 90/70xx Gateway Foundational Base Capacity 5yr Sub SaaS
ROG56AAS	HPE Aruba Networking 90/70xx Gateway Foundational Base Capacity 7yr Sub SaaS

**Table 11.** SD-WAN Foundational + security subscription SKUs and descriptions

SKU	Description
<b>Foundational + security: 90XX, 91XX, 92XX</b>	
R4D98AAE	HPE Aruba Networking 90xx Gateway Foundational plus Security 1yr Subscription E-STU
R4D99AAE	HPE Aruba Networking 90xx Gateway Foundational plus Security 3yr Subscription E-STU
R4E00AAE	HPE Aruba Networking 90xx Gateway Foundational plus Security 5yr Subscription E-STU
R4E01AAE	HPE Aruba Networking 90xx Gateway Foundational plus Security 7yr Subscription E-STU
R4E02AAE	HPE Aruba Networking 90xx Gateway Foundational plus Security 10yr Subscription E-STU
R4D98AAS	HPE Aruba Networking 90xx Gateway Foundational plus Security 1yr Sub SaaS
R4D99AAS	HPE Aruba Networking 90xx Gateway Foundational plus Security 3yr Sub SaaS
R4E00AAS	HPE Aruba Networking 90xx Gateway Foundational plus Security 5yr Sub SaaS
R4E01AAS	HPE Aruba Networking 90xx Gateway Foundational plus Security 7yr Sub SaaS
R4E02AAS	HPE Aruba Networking 90xx Gateway Foundational plus Security 10yr Sub SaaS
SOB93AAE	HPE Aruba Networking 91xx Gateway Foundation plus Security 1-year Subscription E-STU
SOB94AAE	HPE Aruba Networking 91xx Gateway Foundation plus Security 3-year Subscription E-STU



**Table 11.** SD-WAN Foundational + security subscription SKUs and descriptions

SKU	Description
SOB95AAE	HPE Aruba Networking 91xx Gateway Foundation plus Security 5-year Subscription E-STU
SOB96AAE	HPE Aruba Networking 91xx Gateway Foundation plus Security 7-year Subscription E-STU
SOB97AAE	HPE Aruba Networking 91xx Gateway Foundation plus Security 10-year Subscription E-STU
SOS50AAE	HPE Aruba Networking 92xx Gateway Foundation plus Security 1-year Subscription E-STU
SOS51AAE	HPE Aruba Networking 92xx Gateway Foundation plus Security 3-year Subscription E-STU
SOS52AAE	HPE Aruba Networking 92xx Gateway Foundation plus Security 5-year Subscription E-STU
SOS53AAE	HPE Aruba Networking 92xx Gateway Foundation plus Security 7-year Subscription E-STU
SOS54AAE	HPE Aruba Networking 92xx Gateway Foundation plus Security 10-year Subscription E-STU

**Table 12.** SD-WAN Foundational base + security subscription SKUs and descriptions

SKU	Description
<b>HPE Aruba Networking Foundational Base + security: 9004, 9004-LTE, 9012</b>	
R4D93AAE	HPE Aruba Networking 90xx Gateway Foundational Base plus Security 1yr Subscription E-STU
R4D94AAE	HPE Aruba Networking 90xx Gateway Foundational Base plus Security 3yr Subscription E-STU
R4D95AAE	HPE Aruba Networking 90xx Gateway Foundational Base plus Security 5yr Subscription E-STU
R4D96AAE	HPE Aruba Networking 90xx Gateway Foundational Base plus Security 7yr Subscription E-STU
R4D97AAE	HPE Aruba Networking 90xx Gateway Foundational Base plus Security 10yr Subscription E-STU
R4D93AAS	HPE Aruba Networking 90xx Gateway Foundational Base plus Security 1yr Sub SaaS
R4D94AAS	HPE Aruba Networking 90xx Gateway Foundational Base plus Security 3yr Sub SaaS
R4D95AAS	HPE Aruba Networking 90xx Gateway Foundational Base plus Security 5yr Sub SaaS
R4D96AAS	HPE Aruba Networking 90xx Gateway Foundational Base plus Security 7yr Sub SaaS
R4D97AAS	HPE Aruba Networking 90xx Gateway Foundational Base plus Security 10yr Sub SaaS



**Table 13.** SD-WAN advanced subscription SKUs and description

SKU	Description
<b>Advanced: 70XX, 72XX, 90XX, 91XX and 92XX</b>	
JZ121AAE	HPE Aruba Networking 90/70xx Gateway Advanced 1yr Subscription E-STU
JZ122AAE	HPE Aruba Networking 90/70xx Gateway Advanced 3yr Subscription E-STU
JZ123AAE	HPE Aruba Networking 90/70xx Gateway Advanced 5yr Subscription E-STU
ROG54AAE	HPE Aruba Networking 90/70xx Gateway Advanced 7yr Subscription E-STU
ROG55AAE	HPE Aruba Networking 90/70xx Gateway Advanced 10yr Subscription E-STU
SOB98AAE	HPE Aruba Networking 91xx Gateway Advanced 1-year Subscription E STU
SOB99AAE	HPE Aruba Networking 91xx Gateway Advanced 3-year Subscription E STU
SOC00AAE	HPE Aruba Networking 91xx Gateway Advanced 5-year Subscription E STU
SOC01AAE	HPE Aruba Networking 91xx Gateway Advanced 7-year Subscription E STU
SOC02AAE	HPE Aruba Networking 91xx Gateway Advanced 10-year Subscription E STU
JZ198AAE	HPE Aruba Networking 92/72xx Gateway Advanced 1-year Subscription E-STU
JZ199AAE	HPE Aruba Networking 92/72xx Gateway Advanced 3-year Subscription E-STU
JZ200AAE	HPE Aruba Networking 92/72xx Gateway Advanced 5-year Subscription E-STU
ROG62AAE	HPE Aruba Networking 92/72xx Gateway Advanced 7-year Subscription E-STU
ROG63AAE	HPE Aruba Networking 92/72xx Gateway Advanced 10-year Subscription E-STU
JZ121AAS	HPE Aruba Networking 90/70xx Gateway Advanced 1yr Sub SaaS
JZ122AAS	HPE Aruba Networking 90/70xx Gateway Advanced 3yr Sub SaaS
JZ123AAS	HPE Aruba Networking 90/70xx Gateway Advanced 5yr Sub SaaS
ROG54AAS	HPE Aruba Networking 90/70xx Gateway Advanced 7yr Sub SaaS
ROG55AAS	HPE Aruba Networking 90/70xx Gateway Advanced 10yr Sub SaaS
JZ198AAS	HPE Aruba Networking 92/72xx Gateway Advanced 1yr Sub SaaS
JZ199AAS	HPE Aruba Networking 92/72xx Gateway Advanced 3yr Sub SaaS
JZ200AAS	HPE Aruba Networking 92/72xx Gateway Advanced 5yr Sub SaaS
ROG60AAS	HPE Aruba Networking 92/72xx Gateway Advanced 7yr Sub SaaS



**Table 14.** SD-WAN Advanced + security subscription SKUs and descriptions

SKU	Description
<b>Advanced + security: 90XX, 91XX, 92XX</b>	
R4E03AAE	HPE Aruba Networking 90xx Advanced plus Security 1yr Subscription E-STU
R4E04AAE	HPE Aruba Networking 90xx Advanced plus Security 3yr Subscription E-STU
R4E05AAE	HPE Aruba Networking 90xx Advanced plus Security 5yr Subscription E-STU
R4E06AAE	HPE Aruba Networking 90xx Advanced plus Security 7yr Subscription E-STU
R4E07AAE	HPE Aruba Networking 90xx Advanced plus Security 10yr Subscription E-STU
R4E03AAS	HPE Aruba Networking 90xx Gateway Advanced plus Security 1yr Sub SaaS
R4E04AAS	HPE Aruba Networking 90xx Gateway Advanced plus Security 3yr Sub SaaS
R4E05AAS	HPE Aruba Networking 90xx Gateway Advanced plus Security 5yr Sub SaaS
R4E06AAS	HPE Aruba Networking 90xx Gateway Advanced plus Security 7yr Sub SaaS
R4E07AAS	HPE Aruba Networking 90xx Gateway Advanced plus Security 10yr Sub SaaS
SOC03AAE	HPE Aruba Networking 91xx Gateway Advanced plus Security 1-year Subscription E-STU
SOC04AAE	HPE Aruba Networking 91xx Gateway Advanced plus Security 3-year Subscription E-STU
SOC05AAE	HPE Aruba Networking 91xx Gateway Advanced plus Security 5-year Subscription E-STU
SOC06AAE	HPE Aruba Networking 91xx Gateway Advanced plus Security 7-year Subscription E-STU
SOC07AAE	HPE Aruba Networking 91xx Gateway Advanced plus Security 10-year Subscription E-STU
SOS55AAE	HPE Aruba Networking 92xx Gateway Advanced plus Security 1-year Subscription E-STU
SOS56AAE	HPE Aruba Networking 92xx Gateway Advanced plus Security 3-year Subscription E-STU
SOS57AAE	HPE Aruba Networking 92xx Gateway Advanced plus Security 5-year Subscription E-STU
SOS58AAE	HPE Aruba Networking 92xx Gateway Advanced plus Security 7-year Subscription E-STU
SOS59AAE	HPE Aruba Networking 92xx Gateway Advanced plus Security 10-year Subscription E-STU



**Table 15.** HPE Aruba Networking virtual gateway subscription SKUs and descriptions

SKU	Description
<b>HPE Aruba Networking virtual gateway</b>	
ROX97AAE	HPE Aruba Networking Virtual Gateway 500Mbps 1yr Sub E-STU
ROX98AAE	HPE Aruba Networking Virtual Gateway 500Mbps 3yr Sub E-STU
ROX99AAE	HPE Aruba Networking Virtual Gateway 500Mbps 5yr Sub E-STU
R3V73AAE	HPE Aruba Networking Virtual Gateway 2Gbps 1yr Sub E-STU
R3V74AAE	HPE Aruba Networking Virtual Gateway 2Gbps 3yr Sub E-STU
R3V75AAE	HPE Aruba Networking Virtual Gateway 2Gbps 5yr Sub E-STU
R3V76AAE	HPE Aruba Networking Virtual Gateway 4Gbps 1yr Sub E-STU
R3V77AAE	HPE Aruba Networking Virtual Gateway 4Gbps 3yr Sub E-STU
R3V78AAE	HPE Aruba Networking Virtual Gateway 4Gbps 5yr Sub E-STU

**Use cases for HPE Aruba Networking Central advanced SD-Branch subscriptions**

The Foundational-level subscriptions address a wide range of use cases within the base price for HPE Aruba Networking SD-Branch deployments. However, several premium features may be desirable, which are only available with security add-ons or Advanced subscriptions. Please refer to the sample list of use cases below.

If you require:

1. AI-powered insights into WAN health: selecting the Advanced subscriptions will enable [AI insights](#) that help you compare the performance of links across peer sites, as well as automatically redirect traffic over alternative paths when existing links are underperforming, congested, or not satisfying SLAs.
2. Advanced threat management and security: selecting the Security add-on subscription SKUs will enable more advanced protection mechanisms for your branches and other remote locations, including IDS/IPS, anti-malware, and more.
3. Better SaaS application performance: selecting the Advanced subscriptions enables [SaaS Express](#), which can improve the performance of critical SaaS applications such as Microsoft 365 by dynamically sending traffic over the optimal WAN link and to the best hosting server.
4. Enhanced protection and automated configuration: selecting the Advanced subscription enables the use of HPE Aruba Networking Central NetConductor services such as the Fabric Wizard for automated overlay configuration to streamline the adoption of role-based access policies at global scale.





## Support features and optional add-ons

HPE Aruba Networking devices (access points, switches, and gateways) that have an active HPE Aruba Networking Central SaaS subscription are fully supported and include:

- 24x7 priority technical support for troubleshooting.
- Software updates and upgrades for HPE Aruba Networking Central and all hardware products managed by HPE Aruba Networking Central.
- Options to upgrade parts replacement for all hardware managed by HPE Aruba Networking Central with a [HPE Aruba Networking Foundational Care](#) contract for either next business day exchange or 4-hour onsite repair and replacement.

In addition to hardware replacement options, you can also optionally add [HPE Aruba Networking Pro Care](#) for fast access to senior HPE Aruba Networking TAC Engineers, who are assigned as a single point of contact for case management, reducing the time spent addressing and resolving issues.

## For complete details on HPE Aruba Networking Foundational Care and HPE Aruba Networking Pro Care, please visit:

[arubanetworks.com/support-services/](https://arubanetworks.com/support-services/)

Visit [ArubaNetworks.com](https://arubanetworks.com)



**Make the right purchase decision.  
Contact our presales specialists.**



**Contact us**